

**SOD2 Antibody**  
**Rabbit mAb**  
**Catalog # AP90976****Specification**

---

**SOD2 Antibody - Product Information**

Application	WB, IHC
Primary Accession	<a href="#">P04179</a>
Reactivity	Rat
Clonality	Monoclonal
<b>Other Names</b>	
SOD2; IPOB; MNSOD; MVCD6;	
Isotype	Rabbit IgG
Host	Rabbit
Calculated MW	24750 Da

**SOD2 Antibody - Additional Information**

Dilution	WB~~1:1000 IHC~~1:100~500
Purification	Affinity-chromatography
Immunogen	A synthesized peptide derived from human SOD2
Description	SOD-2 is a homotetrameric manganese enzyme (also known as MnSOD) that functions in the mitochondrion. ROS are implicated in a wide range of degenerative processes, including Alzheimer's disease, Parkinson's disease and ischemic heart disease. Homozygous mutant mice, which lack SOD-2, exhibit dilated cardiomyopathy, accumulation of lipid in liver and skeletal muscle, metabolic acidosis, oxidative DNA damage and respiratory chain deficiencies in heart and skeletal muscle.
Storage Condition and Buffer	Rabbit IgG in phosphate buffered saline , pH 7.4, 150mM NaCl, 0.02% sodium azide and 50% glycerol. Store at +4°C short term. Store at -20°C long term. Avoid freeze / thaw cycle.

**SOD2 Antibody - Protein Information****Name** SOD2**Function**

Destroys superoxide anion radicals which are normally produced within the cells and which are

toxic to biological systems.

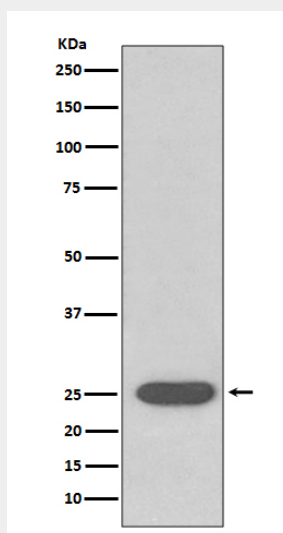
**Cellular Location**

Mitochondrion matrix.

**SOD2 Antibody - Protocols**

Provided below are standard protocols that you may find useful for product applications.

- [Western Blot](#)
- [Blocking Peptides](#)
- [Dot Blot](#)
- [Immunohistochemistry](#)
- [Immunofluorescence](#)
- [Immunoprecipitation](#)
- [Flow Cytometry](#)
- [Cell Culture](#)

**SOD2 Antibody - Images**

Western blot analysis of SOD2 expression in Rat brain lysate.